

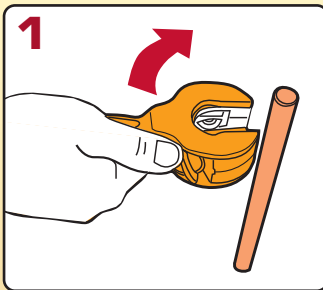
## Ratchet Action Tube Cutters

**RTC829**

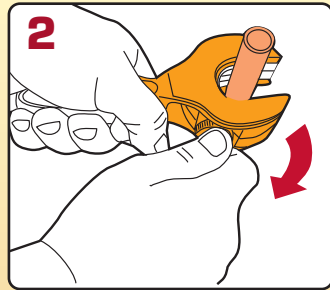


**RTC623**

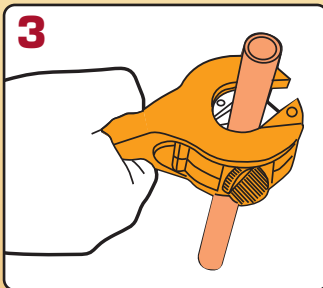
- Self-feeding ratchet motion for easy cutting in close quarters.
- Cuts copper, brass and aluminum tubing as well as thin-walled conduit.



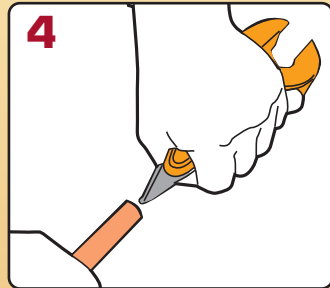
**1** Open cutter with thumb knob.



**2** Tighten cutting wheel



**3** Use back and forth ratchet motion to cut.



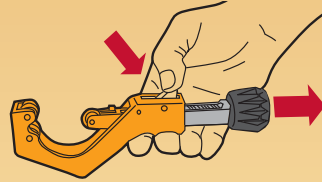
**4** Remove burrs.

Catalog Number	Description	Cutting O.D. Capacity In. (mm)
<b>RTC623</b>	Medium Ratchet Tube Cutter	1/4 - 7/8 (6.4 - 22.2)
<b>RTC829</b>	Large Ratchet Tube Cutter	5/16 - 1-1/8 (7.9 - 28.6)
<b>RW274</b>	Replacement Cutting Wheel for RTC623, RTC829	

Spare cutting wheel located on outside of handle.



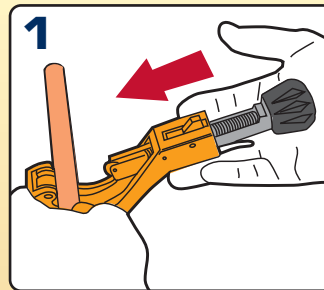
## Spring Loaded Tube Cutter



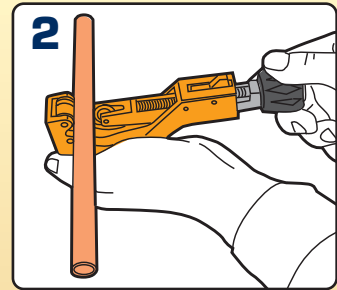
- Fast adjusting with quick-open release after cutting.
- Cuts copper, brass and aluminum tubing as well as thin-walled conduit.



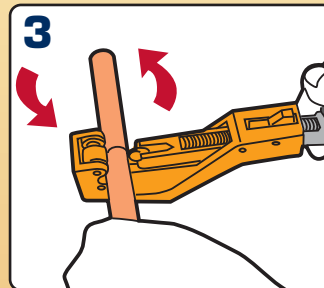
**STC650**



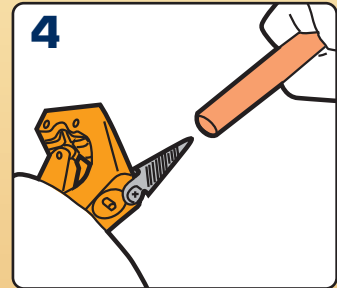
**1** Slip into position



**2** Tighten cutting wheel



**3** Re-tighten with each rotation around tubing



**4** Remove burrs.

Catalog Number	Description	Cutting O.D. Capacity In. (mm)
<b>STC650</b>	Spring Loaded Tube Cutter	1/4 - 2 (6.4 - 50.8)
<b>RW274</b>	Replacement Cutting Wheel for STC650	

Spare cutting wheel located under fold-away ream.

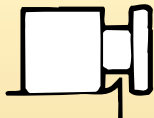


*Malco*

## Tube Cutters



**SPARE CUTTING WHEEL INCLUDED**  
Spare cutting wheel carried under retractable, locking reamer.



**FLARE CUT-OFF GROOVE**  
Groove in roller reduces tube loss when cracked flare is removed.



**BALL BEARING FEED**  
Ball bearing, enclosed feed mechanism provides easier operation, reduces friction.



**RETRACTABLE REAMER**  
Fold away tool steel reamer with turned cutting edge removes inside burrs cleanly. Filing surface removes outside burrs.

For hard or soft copper tubing. Makes clean, right-angle cuts with no burrs or chips to clog tubing. Features ball bearing feed, flare cut-off groove, retractable reamer and spare cutting wheel. Rugged aluminum alloy body is designed for handling ease.

Conforms to federal specification GGG-C771d 1-31-64. Type II, Class 1, Style B.

Catalog Number	Tubing O.D. in. (mm)	Nominal Sizes inches
<b>TC274</b>	1/8 to 1-1/8 (3.2 to 28.6)	1/8 to 1
<b>TC312</b>	1/4 to 1-5/8 (6.4 to 41.3)	1/8 to 1-1/2

### REPLACEMENT CUTTING WHEELS

Catalog Number	Description
<b>RW274</b>	Cutting wheel for TC274, TC312, TC174
<b>75046</b>	Cutting wheel for stainless fits TC274, TC312 and TC174
<b>274TCS</b>	Cutting wheel screw for TC274, TC312, TC174



## Big Imp™ Tube Cutter



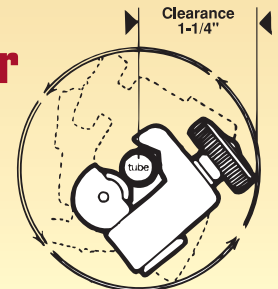
**TC174**

Compact cutter requires only 1-15/16" clearance, yet accommodates tubing from 3/8" to 1-1/8" (9.5 to 28.6 mm) O.D. (1/4" to 1" Nominal). Cuts copper, aluminum or brass, thin wall tubing. Lightweight aluminum alloy body. Spare cutter wheel included with tool.

**Tubing pivots on double rollers.**

Catalog Number	Tubing O.D. in. (mm)
<b>TC174</b>	3/8 to 1-1/8 (9.5 to 28.6)

## Imp™ Tube Cutter



A handy tube cutter for cramped spaces so often encountered on installations or repairs. Only 1-11/16" x 1-15/16" x 7/8" (42.9 x 49.2 x 22.2 mm). Weighs only 2-1/2 oz. (71 g) A mere 1-1/4" (31.8 mm) clearance is all that is needed to operate the "Imp".

Catalog Number	Tubing O.D. in. (mm)
<b>TC127</b>	1/8 to 5/8 (3.2 to 15.9)

### REPLACEMENT WHEEL

Catalog Number	Description
<b>RW127</b>	Cutting wheel for TC127

**127TCS** Cutting wheel screw

Conforms to federal specification GGG-C771d, 1-31-64. Type 2, Class 2, Amendment 2.

## Sure Grip Tube Slicer



Produces cuts in ABS, PVC, rubber and fabric reinforced hose up to 1" (25.4 mm) I.D. Rigid, durable nylon handle design provides sufficient leverage when cutting so that only moderate hand pressure is required. Stainless steel cutting blade is resharpenable and replaceable.

Catalog Number	Description	Net Wt. oz. (g)
<b>TC400</b>	Plastic tube slicer	5 (142)
<b>RB400</b>	Replacement blade	--



## Flaring Tools Bar Clamp Type



**FT195**

Flares 7 sizes of soft copper, aluminum and brass tubing. Forged steel slip-on yoke and hardened flaring bar. Yoke design permits flaring where there is little space between nut and tube end. Positive clamping of bars prevents tube slippage. Hard chrome-finished swivel-type cone makes better flares with less effort. Satin finish nickel-chrome plated.

Conforms to federal specification GGG-G-451a, 6-13-68. Type 2, Class 2, Style A.

Catalog Number	Tubing O.D. in. (mm)	Nominal Sizes inches
<b>FT195</b>	3/16, 1/4, 5/16, 3/8, 7/16, 1/2, 5/8 (4.8, 6.4, 7.9, 9.5, 11.1, 12.7, 15.9)	1/8, 1/4, 3/8, 1/2

## Die Block Type



**FT500**

For soft copper, aluminum and brass tubing. Faceted, hard chrome finished cone rolls out perfect 45° flares - then automatically burnishes flare face. Handy slip-on yoke permits use in tight quarters. Movable dies allow tubing to be slipped in easily. Heat treated dies grip tubing without scoring and the original tube wall thickness is maintained at base of flare. Satin chrome and black nickel finish.

Catalog Number	Tubing O.D. in. (mm)	Nominal Sizes inches
<b>FT500</b>	3/16, 1/4, 5/16, 3/8, 1/2, 5/8 (4.8, 6.4, 7.9, 9.5, 12.7, 15.9)	1/8, 1/4, 3/8, 1/2

## Reamer-Deburring Tools



**R208**

For copper, aluminum and brass tubing. Reams both inside and outside edges of tube with 3 hollow ground tool steel blades. Tool cuts when turned both clockwise and counter-clockwise. Fluted body is shaped to fit comfortably in palm.

Catalog Number	Tubing O.D. in. (mm)	Nominal Sizes inches
<b>R208</b>	3/16 to 1-1/2 (4.8 to 38.1)	1/8 to 1-1/4

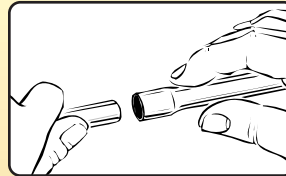
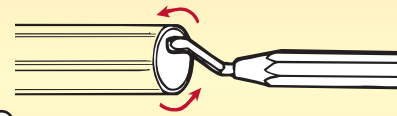
## Pocket Size Deburring Tool



**R308**

Pocket size reamer deburrs nominal 1/4" (6.4 mm) or larger tubing and fittings. Freely rotating, hardened steel blade holds its edge in both copper and ABS/PVC plastic. Under 6" (152 mm) overall length.

Catalog Number	Description
<b>R308</b>	Pocket size, swivel reamer



## Combination Swaging Punches



**ST94**



**ST96**

## Combination Swaging Punch

Three sizes in one tool. Knurled stock for easy removal of punch.

Catalog Number	Tubing O.D. in. (mm)	Nominal Sizes inches
<b>ST94</b>	1/2, 5/8, 7/8 (12.7, 15.9, 22.2)	3/8, 1/2, 3/4

## 6-in-1 SWAGING TOOL

<b>ST96</b>	3/16, 1/4, 5/16, 3/8, 1/2, & 5/8" (4.8, 6.4, 7.9, 9.5, 12.7, 15.9)
-------------	---

## Copper Tube Fitting Brushes



Carbon steel crimped fill handle and stem

Catalog Number	Diameter in. (mm)	Length in. (mm)	Net Wt. oz. (g)
<b>FB1/2</b>	1/2 (12.7)	5/8 (15.9)	1 (28)
<b>FB3/4</b>	3/4 (19.1)	7/8 (22.2)	1 (28)
<b>FB1</b>	1 (25.4)	1-1/8 (28.6)	1 (28)

## Plumbers Roll Abrasive Cloth



**Closed Coat**

**Open Coat**

**Specially processed for cleaning and preparing solder joint fittings**



Creates a bite on metal surface for solder or paint. Aluminum oxide cutting grain rates 9.2 on MO scale (diamond=10). Flexible cloth back fits contours of any surface configuration and hard to reach areas. Long lasting urea resin bonding is water resistant.

### **WHITE CLOTH** Open coat, 120 grit alum. oxide.

Catalog Number	Description
<b>AC110</b>	1-1/2" x 10 yd. (38.1 mm x 9.14 m) white roll

### **BROWN CLOTH** Closed coat, 120 grit alum. oxide.

<b>AC310</b>	1-1/2" x 10 yd. (38.1 mm x 9.14 m) brown roll
--------------	---

## Abrasive Mesh



180 grit open mesh cleans with both sides, requires only light pressure, lasts twice as long as cloth. Scrim is nylon weave. Waterproof adhesive bonding. Will not clog, load or break down.

Catalog Number	Description
<b>AC5M</b>	1-1/2" x 5 yd. (38.1 mm x 4.57 m) mesh roll

## Fin Straightening Tools with Adjustable Nylon Combs



**FST**

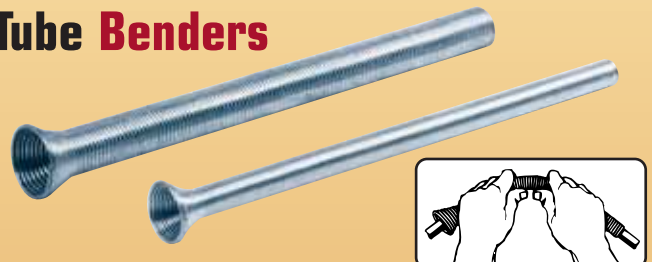


**FST2**

The FST tool straightens commonplace 8, 10, 12 or 14 fins per inch. Use the FST2 tool for straightening closely spaced 16, 18, 20 or 22 fins per inch. Both tools feature one-piece adjustable combs. The resilient nylon comb material will not damage the soft aluminum fins of condenser or evaporator units. Malco fin tools function by either pushing or pulling and efficiently straighten fins in tight quarters or where multiple passes over bent fins are required. Comfortable offset handles provide a sure grip and protect knuckles from scraping.

Catalog Number	Description
<b>FST</b>	Fin Straightening tool for 8, 10, 12 or 14 fins per inch
<b>FST2</b>	Fin Straightening tool for 16, 18, 20 or 22 fins per inch

## Tube Benders



Catalog Number	Tubing O.D. in. (mm)
<b>TB1026</b>	3/8 (9.5)
<b>TB1028</b>	1/2 (12.7)
<b>TB1020</b>	5/8 (15.9)
<b>TB1022</b>	3/4 (19.1)
<b>TB102K KIT:</b> See Note Below: 5 piece set including Tube Benders above plus 1/4" (6.4 mm) size.	

These budget priced tools are for bending soft tubing to any shape without collapsing walls. The special spring steel is zinc finished. One end is flared for quick tube insertion and removal. The 5 convenient sizes can be used economically for many jobs.

