

Siding Tools: Vinyl



Tools of the Trade-
Roofing, Siding
and Gutter

SideSwiper® II

Siding Removal Tool with a durable one-piece steel design. Easy-to-grasp straight handle.

- 1 INSERTION:** Wedge tip of blade under overlapping panel and hook onto the back lip of buttlock.
- 2 UNLOCKING:** Pulling lip downward, slide the tool along length of panel to unlock and expose nail row of panel to be removed.
- 3 PANEL REPLACEMENT:** Lock and nail replacement panel into place. Use tool to relock overlapping panel. Pull down on panel lip and press it into lock of replacement panel below.

Siding

CROSS SECTION VIEW

SRT2

SRT2

NON-SLIP TEXTURED GRIP
permanently bonded to handle.

SideSwiper model SRT2 combines the comfort and added leverage of an easy-to-grasp straight handle with the smooth unlocking motion of a burr free hook. The blade of the SRT2 is angled from the bottom plane of the handle and allows the user to keep the wrist straight while keeping knuckles well above the work. Blade surface finishing and plating assures that the sharply angled hook will not cut into the vinyl material or produce shavings.

Additional comfort and control is achieved with a non-slip textured handle grip. The gripping surface will not become slick from moisture, and the form fitting, plastisol dip process bonds the grip for the life of the tool.

Durable one piece spring steel construction is virtually indestructible. A handy oversize hang hole in handle accommodates a 1/4" (6.4 mm) peg hook.

SideSwiper®

The Original Malco Siding Removal Tool



Wide body and comfortable vinyl gripped handle protects knuckles and offers leverage and control need for replacing siding panels.

Durable one piece, spring steel construction is virtually indestructible.

CATALOG NUMBER	DESCRIPTION	LENGTH IN. (MM)	NET WT. OZ. (G)
SRT1	"Original" Siding removal tool	4-1/4 (108)	1 (28)
SRT2	Siding removal tool	6-1/4 (159)	3 (85)
SRT1B	"Original" Siding removal tool bulk (25)		
SRT2B	Siding removal tool bulk (25)		





SCRIBE IT



SQUARE IT



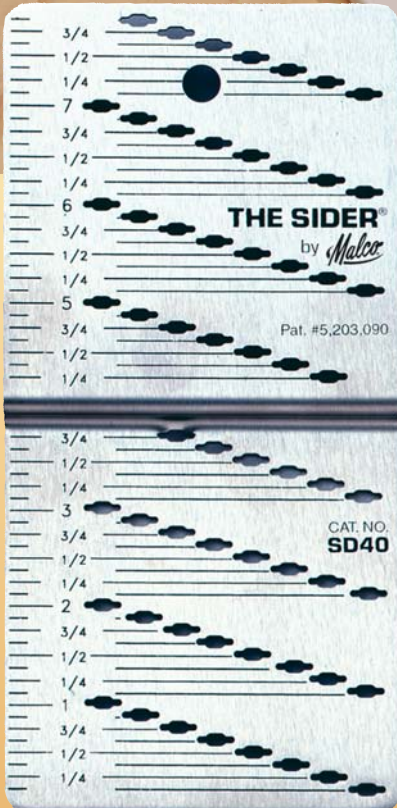
CUT IT!



**Tools of the Trade-
Roofing, Siding
and Gutter**

THE SIDER

U.S. Patent No. 5,203,090



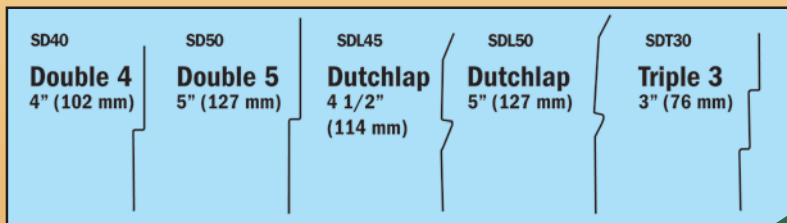
Marking, Cutting Template

THE SIDER Pays for itself on the First job!

Save up to 3 profitable hours on each job with the innovative Sider. It works quickly and accurately, replacing chalk lines, squares and straight edges. **Use it as a scribe or square to mark or score precise lines.** Or go straight to cutting with your utility knife in the precisely marked 1/8" (3.2 mm) holes. **The Sider comes in 5 sizes to match popular siding profiles** and features durable 18-gauge (1.22 mm) stainless steel construction. It's one smart little tool for even the biggest siding jobs.

Choose from 5 Sider sizes to fit most siding panel styles.

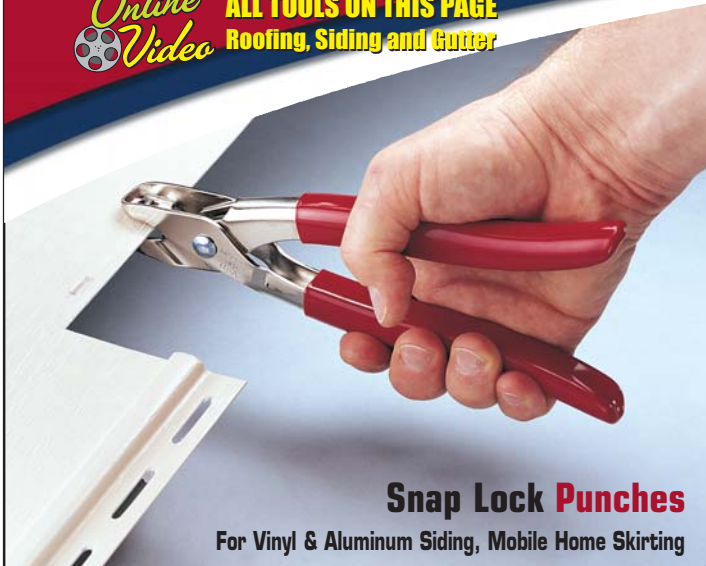
CATALOG NUMBER	DESCRIPTION	NET Wt. oz. (g)
SD40	Sider Double 4	7 oz. (199)
SD50	Sider Double 5	8 oz. (227)
SDL45	Sider Dutchlap 4-1/2	7 oz. (199)
SDL50	Sider Dutchlap 5	8 oz. (227)
SDT30	Sider Triple 3	8 oz. (227)



Siding Tools: Vinyl



ALL TOOLS ON THIS PAGE
Roofing, Siding and Gutter



Snap Lock Punches

For Vinyl & Aluminum Siding, Mobile Home Skirting

SL5

Snap lock plastic skirting and siding to finishing trim. Makes tabs in the cut edge of siding panel used as a finishing course at top of wall or below window. Tabs lock into utility trim.* Punch raises a high projection to compensate for natural relaxation of vinyl plastic. It also works well on aluminum siding but is not recommended for steel.

CATALOG NUMBER	THROAT DEPTH IN. (MM)	LENGTH IN. (MM)	NET WT. OZ. (G)
SL5	3/8 (9.5)	9 (229)	12 (340)

*NOTE: The SL5 should not be used when PERMATABS are required to snap into finished trim. For this application we recommend using the Malco SL1 or SL2 Snap Lock Punch. PERMATABS is a trademark of C & H Enterprises. Not Recommended for use below 32° F (0° C).



SL8 (Designed for Vinyl Only)

For securing vinyl skirting and siding to finishing trim. The SL8 produces wider, more secure locking tab projections. Tabs grip a greater surface area and guard against dislodging due to relaxation of vinyl from heat. SL8 installations also resist blowout during times of high pressure and wind. Constructed of steel stampings and rugged investment cast alloy steel jaws. Nickel plate and black oxide finish with compound leverage design and red vinyl cushion grips. Not Recommended for use below 32° F (0° C).

CATALOG NUMBER	THROAT DEPTH IN. (MM)	LENGTH IN. (MM)	NET WT. OZ. (G)
SL8	1/2 (12.7)	8-1/2 (216)	16 (454)

REPLACEMENT SPRING FOR HAND TOOLS

5018	Fits C4, C5, FCN, JCC, JCC50, JCC75, N1, N2, NHP1, S2, S3, S5, S6, S9, SC3, SL1, SL2 AND SL8
-------------	--



Nail Hole Slot Punch

NHP1

The NHP1 punches a generous 5/32" x 3/4" (4.0 to 19.1 mm) horizontal slot for adding or elongating nail holes in vinyl and .019" (0.48 mm) aluminum siding to accommodate irregular stud spacing.

CATALOG NUMBER	SLOT IN. (MM)	THROAT DEPTH IN. (MM)	LENGTH IN. (MM)	NET WT. OZ. (G)
NHP1	5/32 x 3/4 (4.0 x 19.1)	5/8 (15.9)	8-1/2 (216)	16 (454)

REPLACEMENT SPRING FOR HAND TOOLS

5018	Fits NHP1 and SL8 (see bottom of page for full list.)
-------------	---



Trim Nail Hole Punch

TNHP

A 1/4" x 1/8" (6x3 mm) slot is absolutely no bigger than what you need for supporting vinyl or aluminum soffit and fascia without risking buckling of material from temperature changes. And a narrow profile head, extra wide opening jaws and a big 2" (51 mm) throat assures that you can make trim nail hole slots exactly where you need them, - not where you see them.

The TNHP punch easily fits inside soffit contours or over the lip edge of fascia. The result is a clean professional installation that is as easy to look at as the tool is to use. Built for long service it features Malco's signature compound leverage handles and comfortable vinyl grips and hand stops. Not recommended for use with some styles of stainless steel trim nails.

CATALOG NUMBER	SLOT IN. (MM)	THROAT DEPTH IN. (MM)	LENGTH IN. (MM)	NET WT. OZ. (G)
TNHP	1/4 x 1/8 (6.4 x 3.2)	2 (50.8)	10 (254)	18 (510)





ALL TOOLS ON THIS PAGE
Roofing, Siding and Gutter

J-Channel Cutters



U.S. Patent No. 6,240,764

MAKE DRAIN TABS, downstream NOTCH CUTOUTS & 45-degree miter TRIM CUTS with one tool!



45° trim cut



JCC50
1/2"
(12.7 mm)

JCC
5/8"
(15.9 mm)

JCC75
3/4"
(19.1 mm)



Use graduations on jaw to gauge cutting depths of 3/8" to 1-1/4" (9.5 to 31.2 mm)



Depth Gauge

Malco J-Channel Cutters are available for 1/2" (12.7 mm), 5/8" (15.9 mm) and 3/4" (19.1 mm) channel. Grips are color coded for easy tool identification. And all Malco J-Channel Cutters feature compound leverage for easy cutting action plus comfortable vinyl grips and hand stops. All steel construction and rust resistant nickel chrome and black oxide finishes prolong the life of these tools.

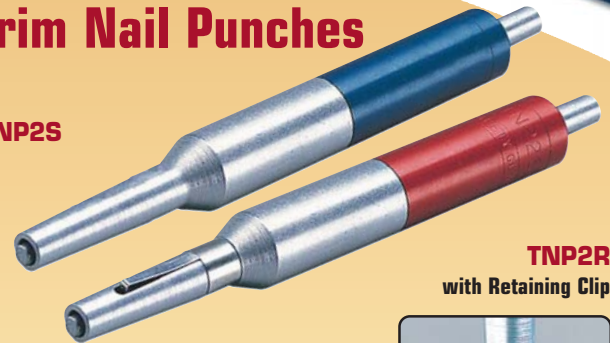
CATALOG NUMBER	DESCRIPTION	GRIPS	OVERALL LGTH. IN. (MM)	NET WT. OZ. (G)
JCC50	1/2" (12.7 mm) J-CHANNEL CUTTER	RED	8-7/8 (225)	16 (454)
JCC	5/8" (15.9 mm) J-CHANNEL CUTTER	BLUE	8-7/8 (225)	16 (454)
JCC75	3/4" (19.1 mm) J-CHANNEL CUTTER	BLACK	8-7/8 (225)	16 (454)

REPLACEMENT SPRING FOR HAND TOOLS

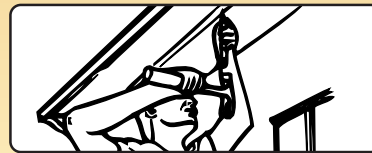
5018 Fits JCC, JCC50, JCC75 (see page 44 for full list.)

Heavy Duty Trim Nail Punches

TNP2S



TNP2R
with Retaining Clip



Holds nail securely while positioning punch

Drive trim nails into soffit, fascia and other finishing trim without denting or marring material. All-steel nose and aluminum tail piece directs weight of this punch to the working end when grasping or starting a nail. Accommodates up to 1-1/4" (31.2 mm) standard trim nails. Nose fits into 1/2" (12.7 mm) J channel.

CATALOG NUMBER	DESCRIPTION	LENGTH IN. (MM)	NET WT. OZ. (G)
TNP2S	Trim Nail Punch	8 (203)	6 (170)

Trim Nail Punch with Retaining Clip

For easier nailing from any angle or height, Malco now offers a Trim Nail Punch with an exclusive, "nail retaining clip" feature. Avoid the awkwardness and strain of balancing nails in the nose of the punch or holding back the drive pin while standing on a ladder or reaching out to nail. The new retaining clip also minimizes scrapes and dents caused by nail slip-page or improper setting depth.

CATALOG NUMBER	DESCRIPTION	LENGTH IN. (MM)	NET WT. OZ. (G)
TNP2R	Trim nail punch w/clip	6-3/4 (171)	6 (170)
TNP2CL	Replacement nail clip		

MINI-SIZE Trim Nail Punch



TNP3S

Pocket size punch is constructed of hardened steel, the tool will hold and install standard 1-1/4" (31.2 mm) trim nails. Small size allows easy access to recesses of formed trim pieces. Hex collar prevents rolling when tool is set down. Corrosion resistant.

CATALOG NUMBER	DESCRIPTION	LENGTH IN. (MM)	NET WT. OZ. (G)
TNP3S	Trim Nail Punch	5 (127)	2 (57)
TNP3SB	Trim Nail Punch bulk (24)		
TNP3SH	Trim Nail Punch bulk (100)		

RELATED ITEMS

BIG 5" and 9" (127 and 229 mm) Seamers See page 19

